

DRAWING NUMBER
37-190

DRAWING NUMBER

DRAWING NUMBER

DRAWING NUMBER

A PLANNED UNIT DEVELOPMENT

THE TENNIS CLUB OF PALM BEACH, PLAT No.3

IN SECTION 24, TOWNSHIP 43 SOUTH, RANGE 42 EAST, PALM BEACH COUNTY, FLORIDA

19

LAND USE SCHEDULE

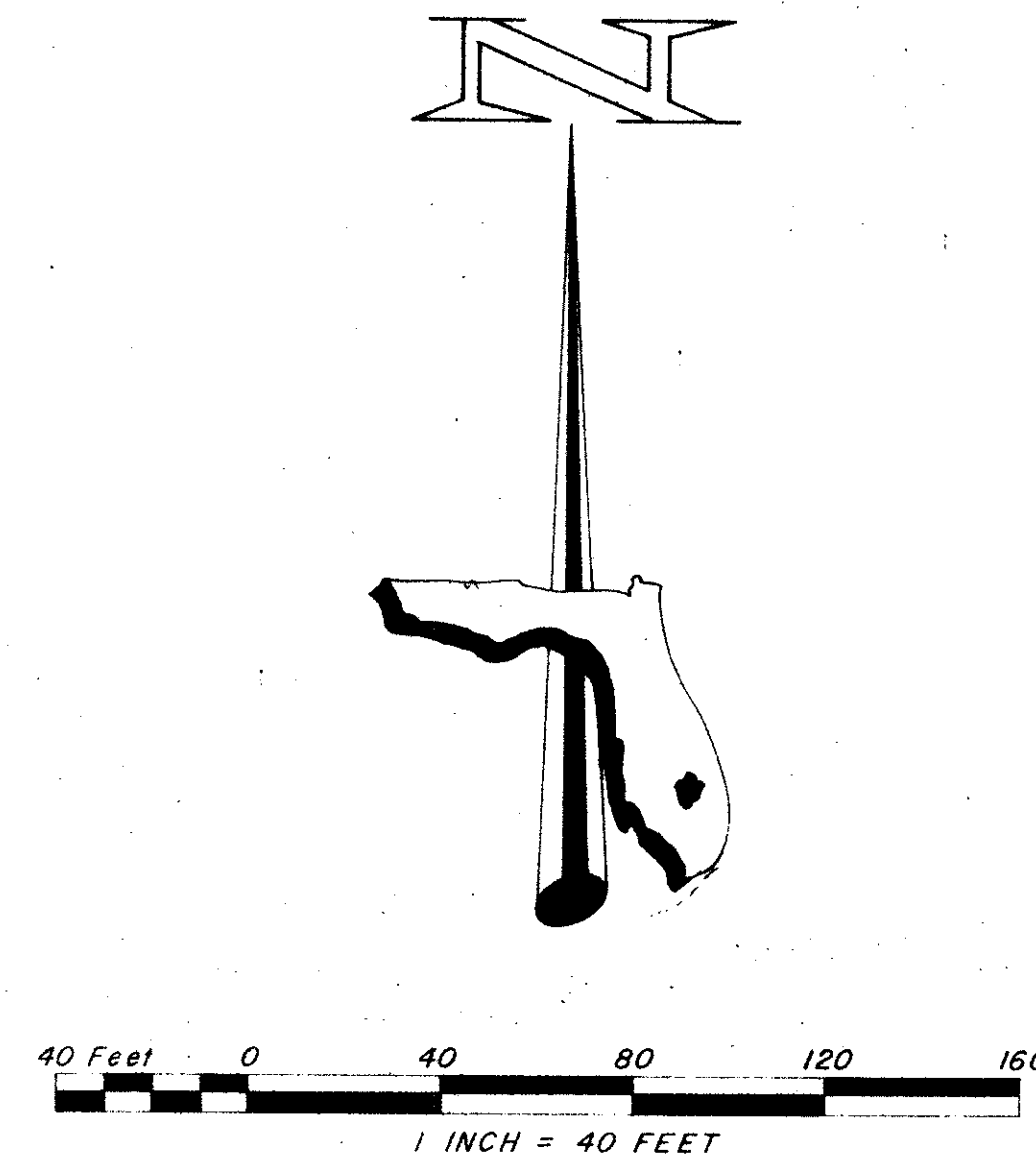
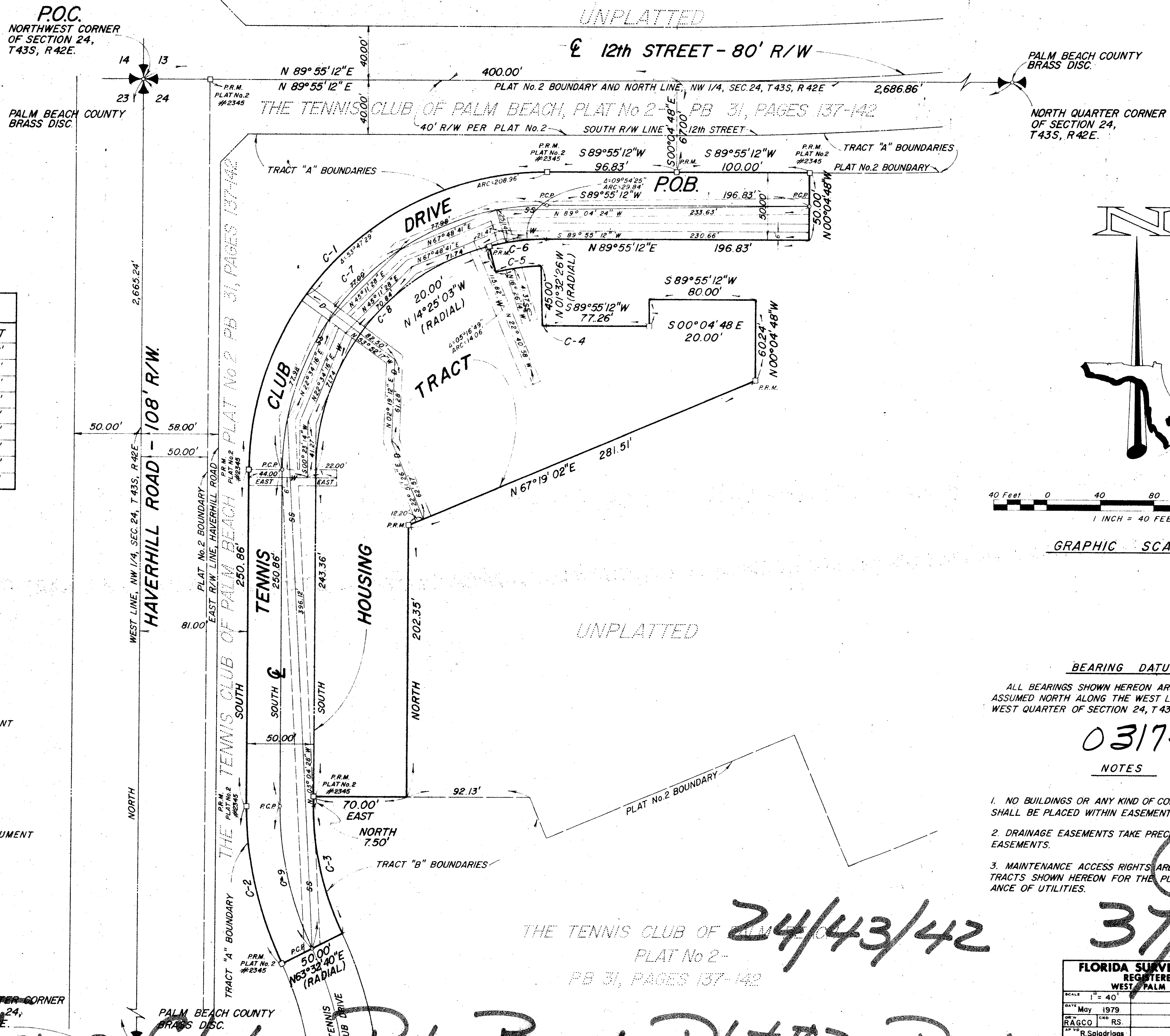
| | |
|---------------------------------|--------------------|
| HOUSING TRACT AREA | = 0.996 ACRES |
| TENNIS CLUB DRIVE | = 1.252 ACRES |
| TOTAL AREA, PLAT No.3 | = 2.248 ACRES |
| PROP. PLAT DENSITY = 40 ÷ 2.248 | = 17.93 UNITS/ACRE |

CURVE DATA

| CURVE | DELTA | RADIUS | ARC | CHORD | TANGENT |
|-------|-------------|---------|---------|---------|---------|
| C-1 | 89° 55' 12" | 222.57' | 349.30' | 314.54' | 222.26' |
| C-2 | 26° 27' 20" | 263.73' | 121.77' | 120.69' | 61.99' |
| C-3 | 26° 27' 20" | 213.73' | 98.69' | 97.81' | 50.24' |
| C-4 | 01° 27' 38" | 107.57' | 2.74' | 2.74' | 1.37' |
| C-5 | 12° 52' 37" | 152.57' | 34.29' | 34.22' | 17.22' |
| C-6 | 14° 20' 15" | 172.57' | 43.18' | 43.07' | 21.70' |
| C-7 | 89° 55' 12" | 197.57' | 310.07' | 279.21' | 197.29' |
| C-8 | 75° 34' 57" | 172.57' | 227.65' | 211.50' | 133.82' |
| C-9 | 26° 27' 20" | 238.73' | 110.23' | 109.25' | 56.12' |

LEGEND

| | |
|--|-------------------------------------|
| | 12' DRAINAGE EASEMENT |
| | 12' SANITARY SEWER EASEMENT |
| | 12' WATER EASEMENT |
| | P.C.P. PERMANENT CONTROL POINT |
| | P.R.M. PERMANENT REFERENCE MONUMENT |



BEARING DATUM
ALL BEARINGS SHOWN HEREON ARE RELATED TO AN ASSUMED NORTH ALONG THE WEST LINE OF THE NORTH-WEST QUARTER OF SECTION 24, T 43S, R 42E.

0317-301
NOTES

1. NO BUILDINGS OR ANY KIND OF CONSTRUCTION OR TREES SHALL BE PLACED WITHIN EASEMENTS.
2. DRAINAGE EASEMENTS TAKE PRECEDENCE OVER UTILITY EASEMENTS.
3. MAINTENANCE ACCESS RIGHTS ARE GRANTED OVER ALL TRACTS SHOWN HEREON FOR THE PURPOSE OF MAINTENANCE OF UTILITIES.

The Tennis Club of Palm Beach Plat #3 - PUD

FLORIDA SURVEYING & MAPPING
REGISTERED LAND SURVEYORS
WEST PALM BEACH, FLORIDA 334

| | |
|------------|--------------|
| SCALE | 1" = 40' |
| DATE | May 1979 |
| DRAWN BY | RAGCO |
| CHECKED BY | RS |
| DATE | 5/10/79 |
| BY | R. Saladrigo |

THE TENNIS CLUB OF PALM BEACH, PLAT NO. 3